

PRODUCT NUMBER

77311-YXX-XXLF

PLATING SEE SHEET 2

PIN STYLE SEE SHEET 2

WHEN REQUIRED, ADD SUFFIX LETTER "LF"
INDICATES THE PRODUCT IS RoHS
COMPATIBLE, SEE NOTE 6
TOTAL NB OF POSITIONS 01 TO 36
OPTION LETTER SEE NOTE 7

PRODUCT NUMBER (BERGSTRIK PACKAGING)

77311-YXX-00LF

PLATING

1= 0.76µm GOLD ON CONTACT
AREA, 2µm TIN MIN ON TAILS

8= 0.38µm GOLD ON CONTACT
AREA, 2µm TIN MIN ON TAILS

4= 2.0µm TIN MIN FULL PLATED

1.27µm NICKEL MIN UNDERLAYER FOR
ALL PLATING VERSIONS

INDICATES THE PRODUCT IS RoHS
COMPATIBLE, SEE NOTE 6

POSITIONS PER REEL : 00=36,000 (BERGSTRIK)

PIN STYLE	MATING	SOLDER	OAL
01	5.84	2.41	10.8
02	5.84	3.42	11.8
18	5.84	3.05	11.43
22	7.75	3.05	13.35
24	6.75	2.9	12.2
27	6.6	2.66	11.8

NOTES:

- HOUSING MAT'L : HIGH TEMPERATURE THERMOPLASTIC. UL94V-0 COLOR: BLACK
- PIN MATERIAL : PHOSPHOR BRONZE
- BERGSTIK PRODUCT PACKAGED IN POLY BAGS. BERGSTRIK PRODUCT PACKAGED PER REELS.
- 9N MIN RETENTION IN EITHER DIRECTION
- TO DETERMINE DIMENSIONS :
N = NUMBER OF POSITIONS PER ROW
EXAMPLE : 8 POS N x 2.54 = 20.32mm
- RoHS COMPATIBLE PRODUCT SPECIFICATIONS

a - PLATING:

- "LF" MEANS THE PRODUCT IS LEAD-FREE, 2µm MINIMUM MATTE TIN OVER 1.27µm MINIMUM NICKEL UNDERPLATE.

b - MANUFACTURING PROCESS COMPATIBILITY

- THE HOUSING WILL WITHSTAND EXPOSURE TO 260°C ±5°C SOLDER BATH TEMPERATURE FOR 5 SECONDS IN A WAVE SOLDER APPLICATION WITH A 1.6mm MIN THICK CIRCUIT BOARD.

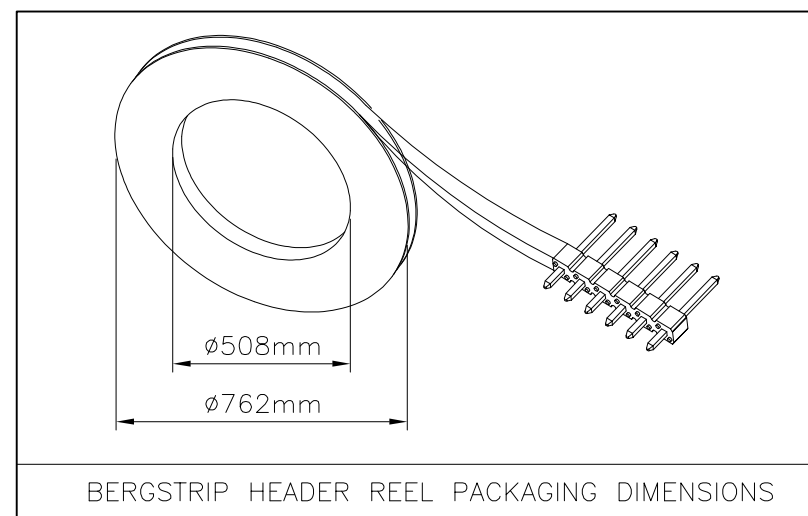
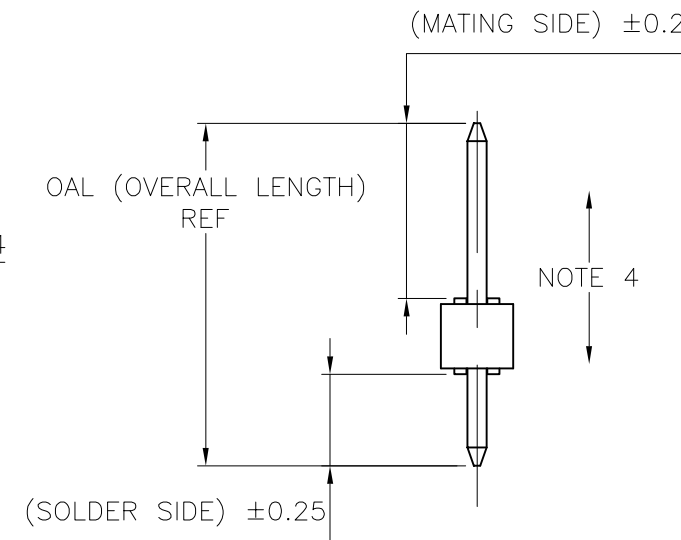
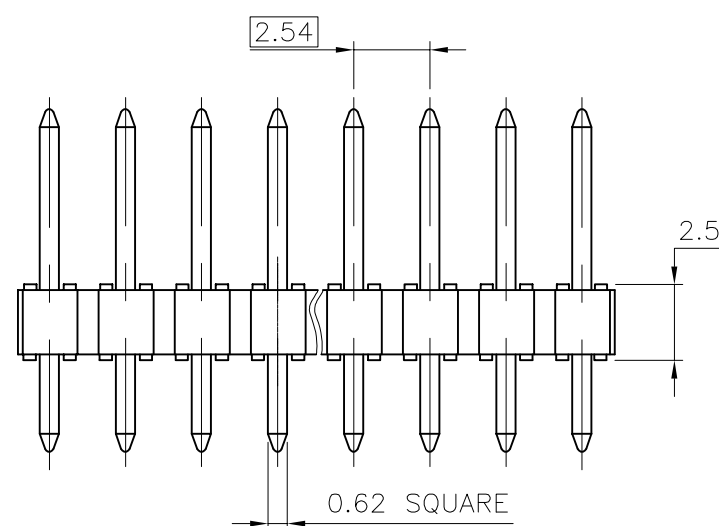
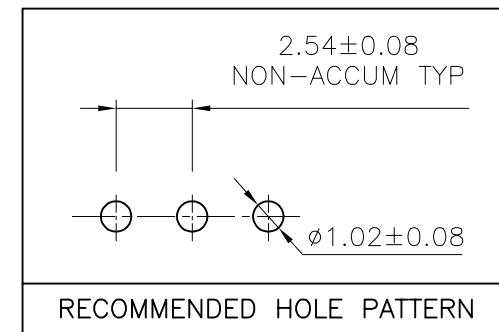
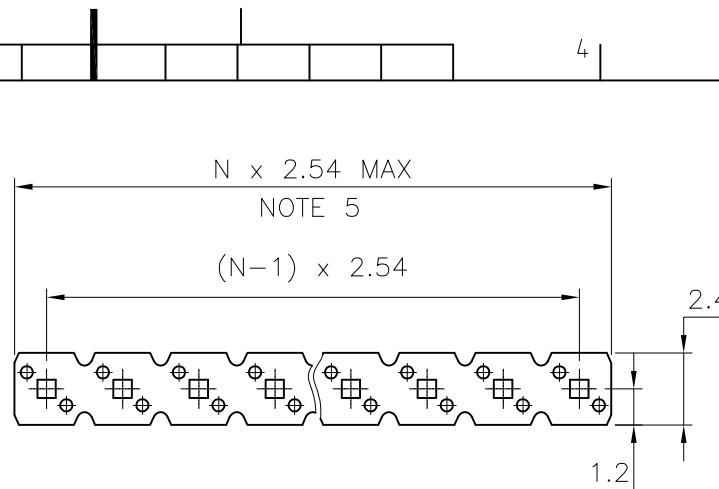
c - LABELING:

- MEETS PACKAGING SPECS AS PER GS-14-920

d - LEGAL STATEMENT: SEE GS-22-008

7. OPTION LETTER :

R = RETENTION FEATURES, SEE SHEET 2
K = TAPE & REEL PACKAGING, WITHOUT PICK UP CAP
ONLY FOR P/N 77311-462K04(LF) AND 77311-462K05(LF)



mat'l. code		surface		tolerance		projection		product family	
SEE NOTES		ISO 1302		ISO 406		mm		BERGSTIK	
		✓		ISO 1101		mm		title	
		tolerances unless otherwise specified				scale 5:1		UNSHR.HEADER	
ltr	ecn no	dr	date	angles	linear			STR SR TMT	
AY	F06-0145	LMU	06.03.08		.x ±0.3			dwg no	
BA	F06-0196	LMU	06.06.20		.xx ±0.15			sheet 1 of 2	
BB	F07-0110	LMU	07.01.17		.xxx ±0.05			size	
BC	F07-0114	LMU	07.01.24	dr	D.LE	01.01.24		77311	
BD	F07-0125	LMU	07.02.05	enr	JM.C	01.01.24		A3	
BE	F07-0155	J.CO	07.03.15	chr	JM.C	01.01.24		type	
BF	F07-0255	LMU	07.09.11	appd	JF.N	01.01.24		CUSTOMER Drawing	
sheet	revision	BF	AX						
index	sheet	1	2						

CORE RANGE				
PLATING	PIN STYLE	MATING	SOLDER	OAL
1	01	5.84	2.41	10.8
1	18	5.84	3.05	11.43

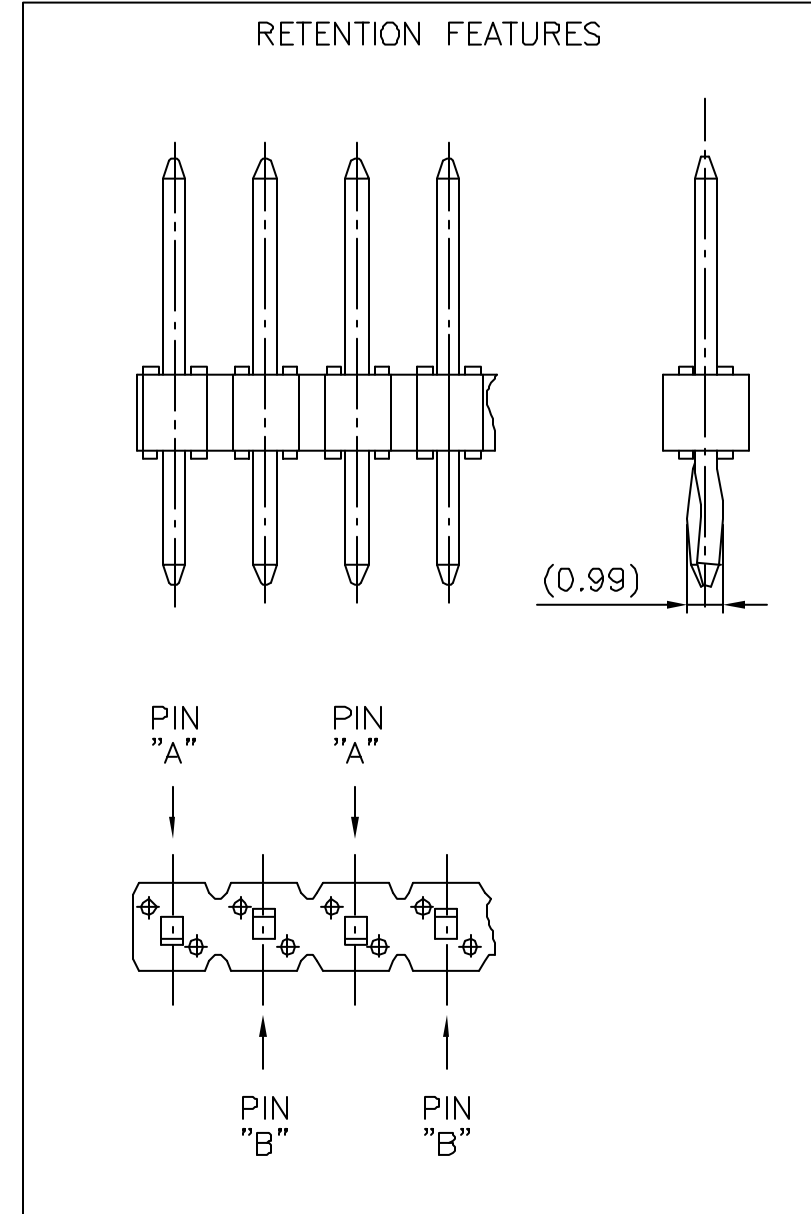
PLATING
 1 = 0.76µm GOLD ON CONTACT AREA
 3.81µm TIN/LEAD ON TAIL
 - WHEN "LF" IS REQUIRED, 2µm MATTE TIN OVER 1.27µm MIN NICKEL IS PROVIDED INSTEAD OF TIN-LEAD

CATALOGUE RANGE				
PLATING	PIN STYLE	MATING	SOLDER	OAL
4/8	01	5.84	2.41	10.8
1/4/8	02	5.84	3.42	11.8
4/8	18	5.84	3.05	11.43
1/4/8	22	7.75	3.05	13.35
1/4/8	24	6.75	2.9	12.2
1/4/8	27	6.6	2.65	11.8

PLATING
 1 = 0.76µm GOLD ON CONTACT AREA
 3.81µm TIN-LEAD ON TAIL
 4 = 3.81µm TIN-LEAD ON CONTACT AREA AND ON TAIL
 8 = 0.38µm GOLD ON CONTACT AREA
 3.81µm TIN-LEAD ON TAIL
 - WHEN "LF" IS REQUIRED, 2µm MATTE TIN OVER 1.27µm MIN NICKEL IS PROVIDED INSTEAD OF TIN-LEAD

APPLICATION SPECIFIC				
PLATING	PIN STYLE	MATING	SOLDER	OAL
1/4/8	03	5.72	5.09	13.35
1/4/8	05	5.72	10.14	18.4
1/4/8	15	8.51	2.55	13.6
1/4/8	19	12.83	3.03	18.4
1/4/8	20	15.37	3.04	20.95
1/4/8	26	15.57	2.84	20.95
1/4/8	29	17.5	3.46	23.5
1/4/8	32	10.3	3.05	15.9
1/4/8	38	5.84	3.82	12.2
1/4/8	46	8.08	2.98	13.6
1/4/8	58	14.47	3.05	20.06
1/4/8	62	13.5	3.05	19.09
1/4/8	70	6.54	3.50	12.57
1/4/8	83	20.46	3.00	26.00
1/4/8	85	5.72	8.51	16.76
1/4/8	87	6.98	3.05	12.57
1/4/8	91	5.6	10.21	18.35
1/4/8	92	5.65	12.76	20.95
1/4/8	93	6.00	4.81	13.35

PLATING
 1 = 0.76µm GOLD ON CONTACT AREA
 3.81µm TIN-LEAD ON TAIL
 4 = 3.81µm TIN-LEAD ON CONTACT AREA AND ON TAIL
 8 = 0.38µm GOLD ON CONTACT AREA
 3.81µm TIN-LEAD ON TAIL
 - WHEN "LF" IS REQUIRED, 2µm MATTE TIN OVER 1.27µm MIN NICKEL IS PROVIDED INSTEAD OF TIN-LEAD



- NOTES FOR RETENTION FEATURES :
- PART NUMBER 77311-XXXXXX(LF)
 - PINS "A" AND "B" USED FOR RETENTION.
 - DIRECTION OF RETENTION SHOWN BY ARROWS.
 - ON 4 TO 36 POSITIONS HEADER; RETENTION IS IN MID POSITION OF HEADER (4 CENTRAL PINS)
 - FOR RETENTION OPTION , SOLDER TAIL LENGTH TO BE 2.9 MIN UP TO 3.5 MAX.

mat'l. code		surface	tolerance	projection	product family
		ISO 1302	ISO 406 ISO 1101		BERGSTIK
Ltr	ecn no	dr	date	tolerances unless otherwise specified	title
AV	F07-0125	LMU	07.02.05	angles	UNSHR.HEADER STR SR TMT
AW	F07-0155	LMU	07.03.15	linear	
AX	F07-0255	LMU	07.09.11		
		dr	D.LE	01.01.24	scale N/A
AS	F06-0196	LMU	06.06.20	engr	JM.C
AT	F07-0110	LMU	07.01.17	chr	JM.C
AU	F07-0114	LMU	07.01.24	appd	JF.N
sheet index	revision sheet				

FCJ

dwg no 77311 sheet 2 of - size A3

type CUSTOMER Drawing